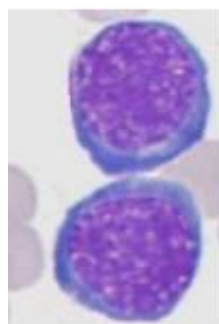
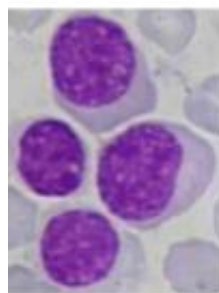




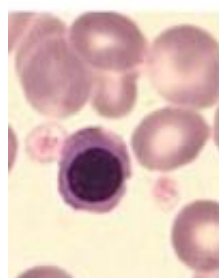
Eritroblastos basófilos



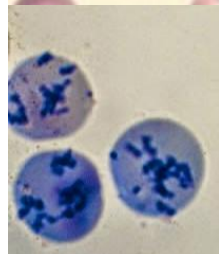
Eritroblastos poli cromáticos



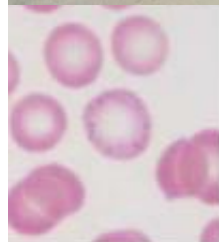
Normoblastos



Reticulocitos



Eritrocitos



Eritrocito normal



Microcíticos Hipocrómicos



Macrocíticos



Normoblastos



Esferocitos



Estomatocitos



Células diana



Dacriocitos



Eliptocitos (Ovalocitos)



Célula falciforme



Acantocitos



Equinocitos



Esquistocitos



Bite cells

Prieto / Balcells



Howell-Jolly

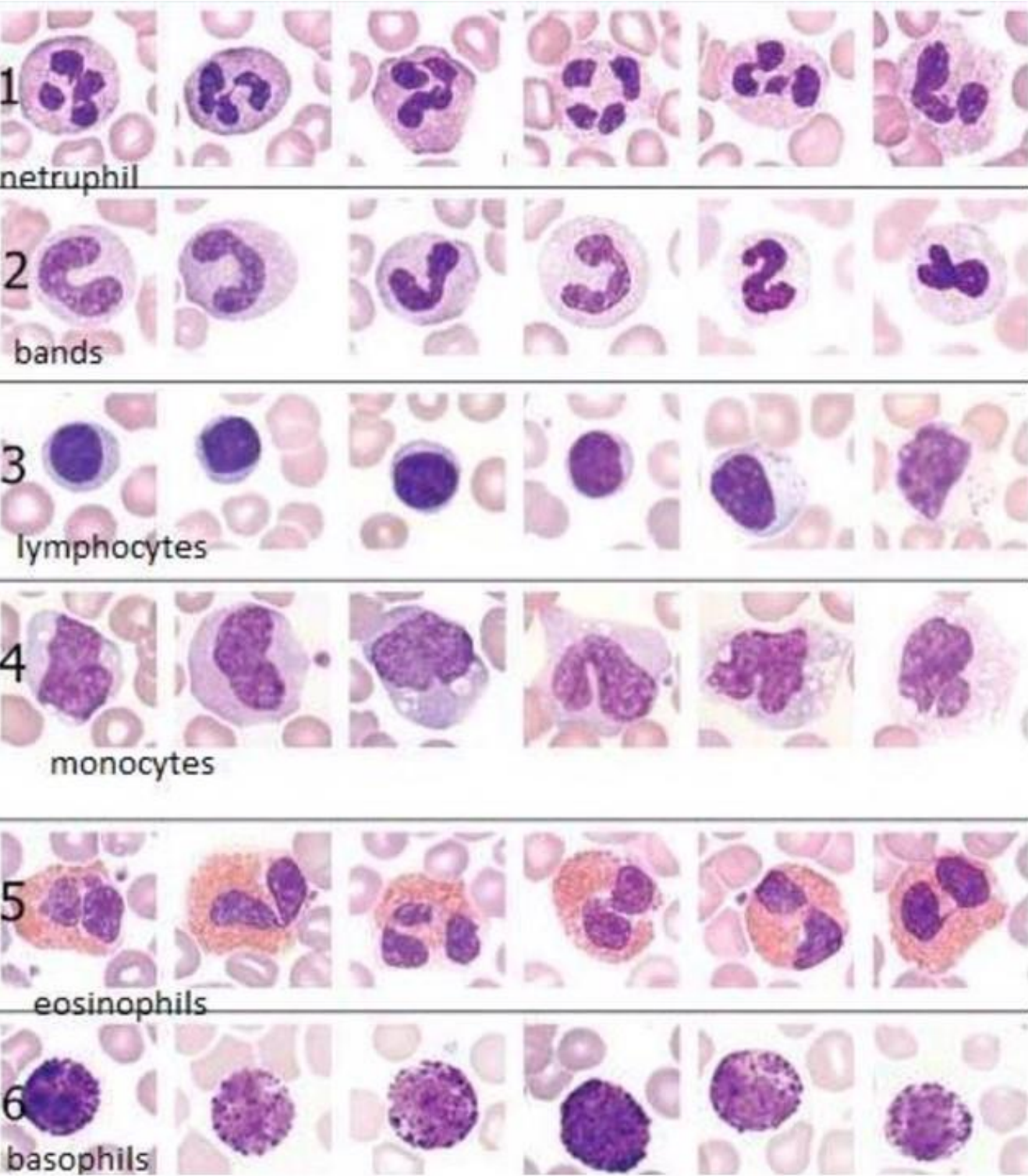


Punteado basófilo

$$\text{Reticulocitos (corregidos)} = \frac{\text{Reticulocitos real (\%)} \times \text{Hematócrito Real}}{\text{Hematócrito normal para la edad/sexo}}$$

$$\text{Índice de producción reticulocitaria (IPR)} = \frac{\text{Reticulocitos corregidos (\%)}}{\text{Vida media del reticulocito (días)}}$$

ERITROPOYESIS



Fluorescencia

